

Centralized IT Infrastructure Management Solution

- CC2000 Management Software
 - KVM Over the NET™
 - Serial Over the NET™
 - Power Over the NET™

www.aten.com



A complete Centralized IT Infrastructure Management Solution

In the modern workplace, enterprise level corporations require a solution that reduces IT operation costs at the same time that it increases IT productivity. Now, ATEN offers just that with a complete web-enabled Centralized IT Infrastructure Management Solution for convenient, economical, centralized remote access and management of your IT devices in multiple data centers and distributed remote offices.

The Solution includes:

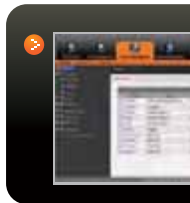
- The ALTUSEN Control Center Over the NET™ Management Software
- ALTUSEN KVM Over the NET™ Switches
- ALTUSEN Power Over the NET™ Appliance
- ALTUSEN Serial Over the NET™ Appliances

When used in conjunction with any Over the NET™ product (KVM Over the NET™, Serial Over the NET™, Power Over the NET™), the CC2000 management software allows IT administrators to remotely monitor and control all installed devices. The Master-Slave paradigm also safeguards your data transmissions through its built-in redundancy factors including: automated database backup of Master, Slaves and devices; and real-time database updating. Redundancy ensures that should any of the CC2000 servers go down, the CC2000 management system keeps functioning since the redundant slave unit takes over to provide the required services until the downed unit comes back up. This double redundancy feature, in which each slave server can have its own redundant slave, ensures smooth, uninterrupted access and management of all your devices.

In addition, the KVM port, serial port and power outlet of an IT device can be associated and presented in the same web

page, which enables IT administrators to completely control an IT device from a single user interface. IT administrators can also power on/off/reboot multiple power outlets of an IT device via a single mouse click. This single, integrated, browser-based interface enables IT administrator to manage IT devices through multiple connection methods without having to access separate user interfaces making system management easier and more efficient.

Powerful security features include both internal and external authentication with security policies that permit user authorization to be tightly configured-even down to a port-by-port basis. Administrators can select which servers and which ports that each user has access to. In this scenario, everyone gains. Users get faster, easier, access to all their equipment via single sign-on web browser access, while administrators maintain the security of the overall installation.



Benefits

A strong centralized management solution provides you benefits in many ways:

1. It lets you quickly and smoothly take control of your installation through a single portal that is accessible from anywhere in the world.
2. It enables a faster response to mission-critical data center emergencies.
3. It eliminates the distance restriction of server room management.



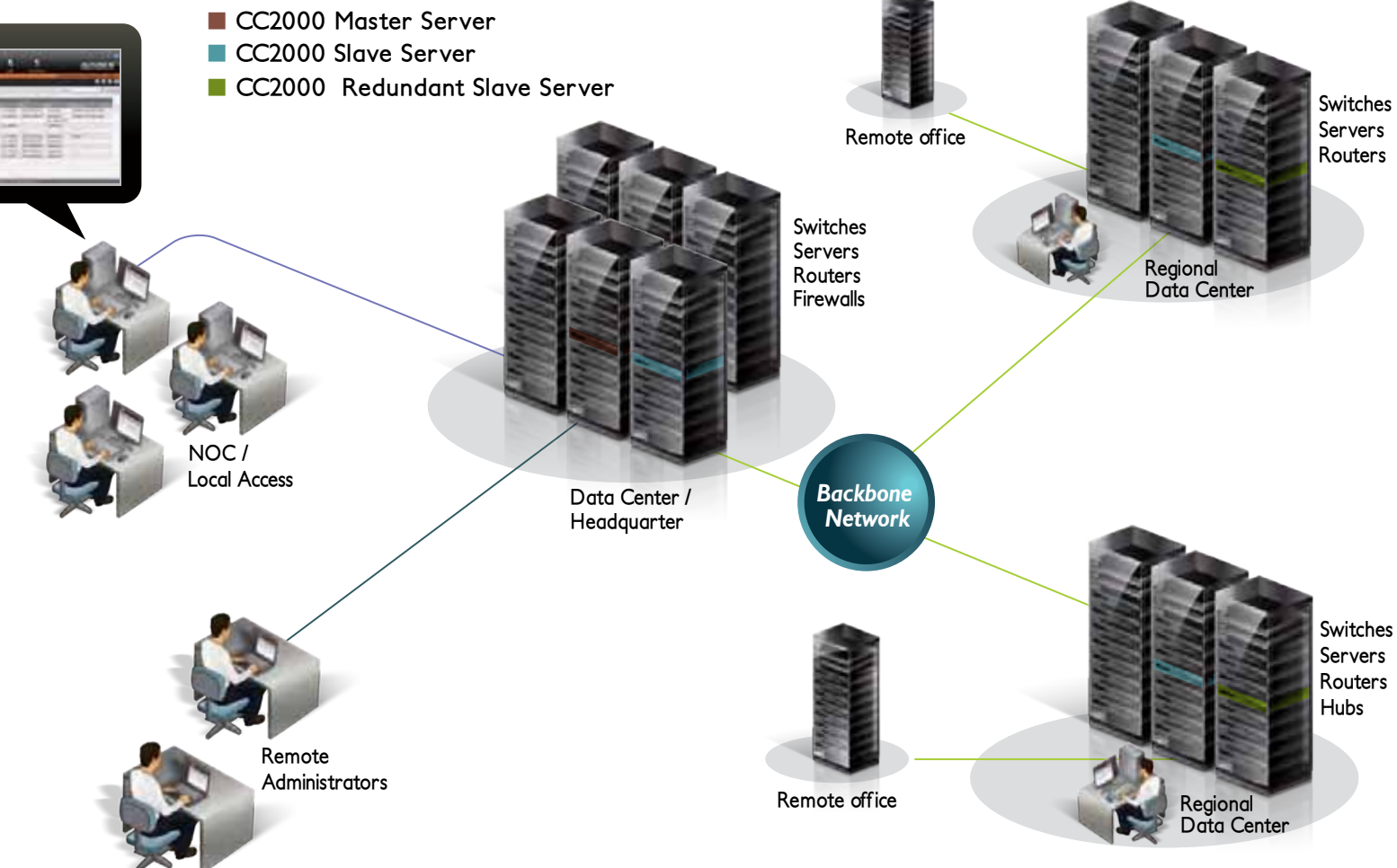


CC2000 Management Software

CC2000 offers a single portal for access and control of devices managed through ALTUSEN Over the NET™ products (KVM, Serial and Power). It enables centralized management of your data center devices and users. CC2000 has one master and up to 31 slave servers. Each server can have a second (redundant) server to take over, in case it goes down. All of the CC2000 servers on the installation can view and manage each other's devices, providing 24-hour reliability all year long.

Features

- Browser based UI with multilanguage support
- Centralized control of ALTUSEN Over the NET™ products and connected IT devices
- Auto identification of ATEN/ALTUSEN products
- Remote diagnostics
- Customizable views and user policies for controlled access
- Supports strong password protection, SAS 70 compliance for configurable amount of failed login attempts and user ID lock out parameters
- Logging, Audits and Alerts
- Automatic scheduling of system and maintenance tasks
- Flexible encryption alternatives for keyboard/mouse, video, and virtual media data – RC4, DES, 3DES, and AES can be chosen separately or in combination – choose your own combination or let the system pick a random one
- Supports authentication via external services (LDAP, LDAPS, Active Directory, RADIUS, TACACS+ and NT Domain)
- Email notification of specified system events





KVM Over the NET™

The new generation of KVM over the NET™ switches allow local and remote operators to monitor and access the entire enterprise data center over the Internet using a web-based browser. In addition, KVM Over the NET™ enables BIOS-level troubleshooting, and provides external modem support when the network is down.

A special Message Board feature – like an Internet chat program – lets any number of remotely logged in users exchange information and communicate with each other or to cooperatively manage the installation. A Panel Array Mode allows real-time monitoring of up to 40 servers at once. Other features that contribute to the switches'

powerful capabilities include: Mouse DynaSync™, Adapter ID, and Virtual Media support.

With their dual on-board NICs and dual power supplies, these switches have been built for 24/7 reliability to ensure the highest rate of availability for your server room and data center services. The switch design also features Green IT solutions that include four temperature sensors to regulate up to six fans – making sure they are always running at optimum speed – throttling down and speeding up depending on the room temperature, reducing data center IT operation costs through a more efficient use of energy

Model	Bus Support	KVM Ports
KN2124v	1 Local; 2 Remote	24
KN2140v	1 Local; 2 Remote	40
KN4124v	1 Local; 4 Remote	24
KN4140v	1 Local; 4 Remote	40
KN2132	1 Local; 2 Remote	32
KN4116	1 Local; 4 Remote	16
KN4132	1 Local; 4 Remote	31



KN4132



KN4140v



Features

- High port density – RJ-45 connectors for up to 40 ports in a 1U housing
- Browser-based UI in pure Web technology allows administrators to perform administrative tasks without pre-installed Java software package required
- High video resolution – up to 1600 x 1200 @ 60Hz – 32 bit color depth for the local console; up to 1600 x 1200 @ 60Hz with 24 bit color depth for remote sessions, at up to 50 m (UTP Cable)
- Remote authentication support: RADIUS, LDAP, LDAPS, and MS Active Directory
- Two 10/100/1000 Mbps NICs for redundant LAN or two IP operation
- Advanced security features include password protection and advanced encryption technologies – 1024 bit RSA; 56 bit DES; 256 bit AES; and 128 bit SSL
- Flexible encryption design allows users to choose any combination of 56-bit DES, 168-bit 3DES, 256-bit AES, 128-bit RC4, or Random for independent KB/Mouse, video, and virtual media data encryption
- Dual Power Supply*
- Full-screen or sizable and scalable Virtual Remote Desktop
- Audio support*
- Virtual Media support*
- Keyboard pass through support
- Exit Macros support
- Panel Array Mode – monitor up to 40 devices simultaneously
- Message Board for communication among remote users
- Mouse DynaSync™
- Critical system events sent by email and SNMP trap; and Syslog support
- Support for IP/MAC Filter
- Green IT – fan speed varies according to temperature*
- Modem dial-in/dial back support
- Integration with ALTUSEN CC2000 Management software

* Available with KN2124v / KN2140v / KN4124v / KN4140v





Serial Over the NET™

The Serial Over the NET™ series consists of the eight port SN0108 and the sixteen port SN0116. Using TCP/IP for their communications protocol, these units provide remote serial access to up to 8 and 16 servers or other serial IT devices (such as switches, routers, power management devices, etc.), from any computer connected to the Internet. Up to 16 users can log in simultaneously. The SN0108 / SN0116 also feature Out-of-Band remote serial access – allowing them to be accessed and controlled even when the network is down.



Features

- Browser based UI with 128bit SSL encryption
- Secure in-band and out-of-band access
- Accessible via Web console, Telnet and SSH
- Multiple User support - Up to 16 users per system/port
- Multi level secure user logins and port-specific access rights
- Diversified operation modes:
 - Console Management
 - Real COM port
 - TCP Server (RAW TCP)

SN0116



- VT320, VT52, VT100, VT220 support
- Individual port configurable communication parameters (bps and flow control)
- Copy, Paste and Print Screen for serial sessions
- Integration with CC2000 Management software
- Local user database and RADIUS integration support
- Session logs provide serial device history
- Alert strings for email and SNMP Trap notification
- Uses UTP cabling

Power Over the NET™

The PN9108 provides eight AC outlets for remote power management of up to eight connected devices. Using TCP/IP for its communications protocol, remote operators can control the power off, power on, and reboot of each attached device from any computer connected to the Internet. The PN9108 offers an intuitive browser-based GUI that allows operators to conveniently and easily handle their installation's power management requirements. Up to 15 additional PN9108 stations can be daisy-chained from the original PN9108, providing remote power management for up to 128 devices. The PN9108 is the most convenient, reliable and cost effective way to remotely power-manage your server room equipment.



Features

- Remote power on / off / reboot control for eight outlets via TCP/IP and a built in 10/100 Ethernet port
- Secure Browser, Telnet and Local Console access
- Daisy-chain up to 15 additional stations to control up to 128 outlets
- On/Off scheduling-allows flexible, user-specified, startup and shutdown times from one-time, to daily, weekly, etc.
- Safe shutdown and rebooting for Windows systems
- Local and remote cumulative current measurement and monitoring of PDU power load

PN9108



- Configurable outlet sequencing prevents surge outages after power loss
- Overcurrent protection and recovery for each outlet
- Port grouping enables performing the same action on a group of outlets once for all of them
- Event logging and log export
- External modem support for OOB management
- Integration with CC2000 Management software





Application

ALTUSEN Solution Meets The Demands of Growing, Global Enterprise

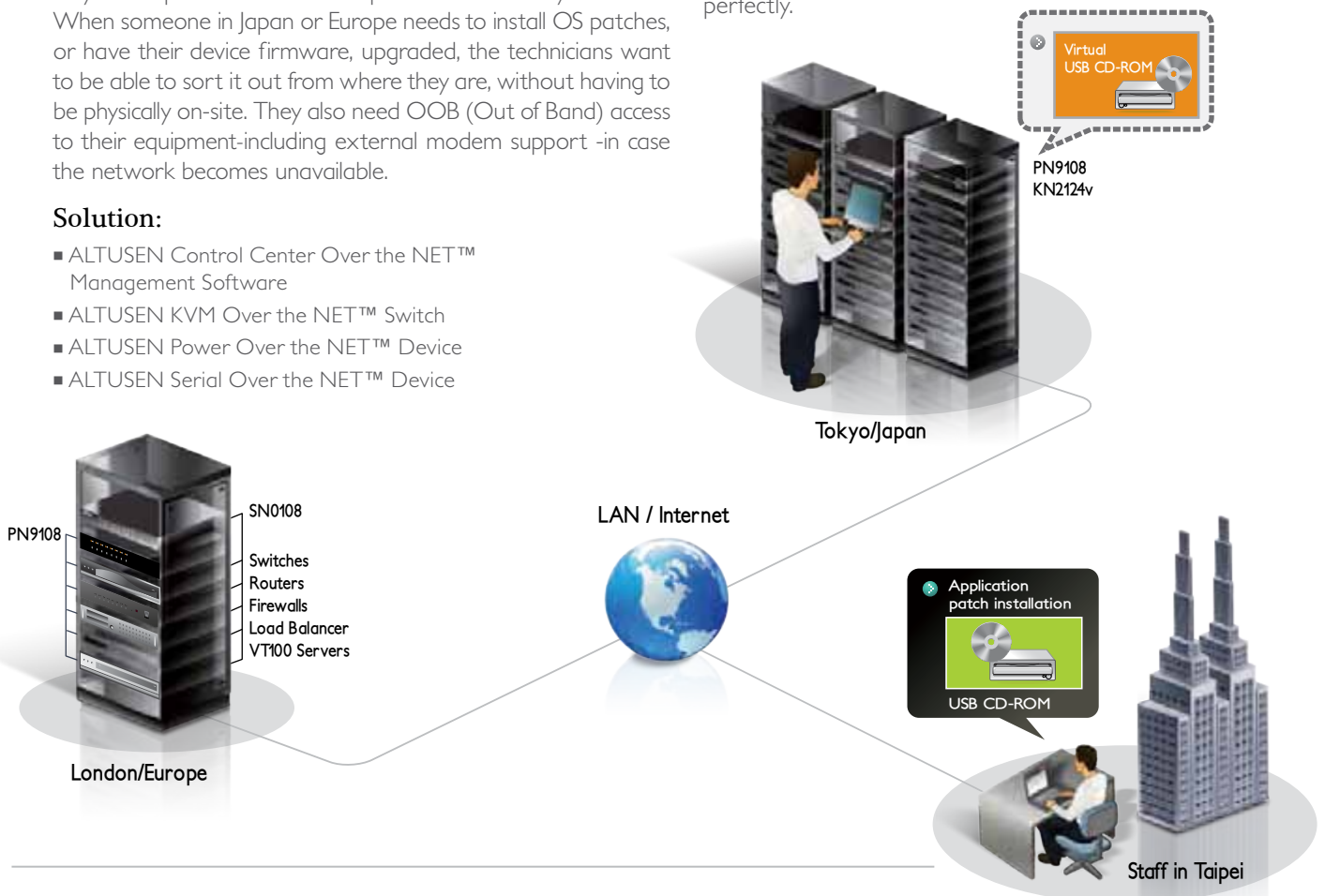
A major international banking group with more than 20 branches worldwide has recently merged with an international financial group that also has numerous branches located in several countries worldwide. With the merger, their activities have spread to real estate, finance, loan management, foundation support, and life insurance. The new operation depends on a comprehensive IT infrastructure to support the tremendous needs of its staff and more than 40,000 customers. Consequently, its web application infrastructure needs to constantly expand.

The challenge for the new IT systems team is to keep up with the demands of a growing, global entity, by choosing the best way to keep the server room operational 24/7 all year round. When someone in Japan or Europe needs to install OS patches, or have their device firmware, upgraded, the technicians want to be able to sort it out from where they are, without having to be physically on-site. They also need OOB (Out of Band) access to their equipment-including external modem support -in case the network becomes unavailable.

Solution:

- ALTUSEN Control Center Over the NET™ Management Software
- ALTUSEN KVM Over the NET™ Switch
- ALTUSEN Power Over the NET™ Device
- ALTUSEN Serial Over the NET™ Device

What they require, therefore, is a solution that allows them to view and manage all of their server room and data center equipment at once, from a single source – even if that equipment consists of a mix of multi-platform servers, routers and power devices that are located in the data centers scattered around the world. They also need the capability to perform diagnostic testing remotely, using virtual media functionality. A further requirement is the need for enhanced security of their encryption algorithms and the ability to use a centralized account database. Finally, they need to have the flexibility to assign individual user rights as well as group permissions. CC2000 Management Software combined with Altusen KN, PN, SN Series products fulfill these requirements perfectly.



ATEN
Simply Better Connections™

ATEN International Co., Ltd.

3F, No.125, Sec. 2, Datung Rd. Sijhih City, Taipei 221, Taiwan
Phone : +886-2-8692-6789 Fax : +886-2-8692-6767
www.aten.com E-mail : online@aten.com.tw

