

www.planet.com.tw



Network Security Solution

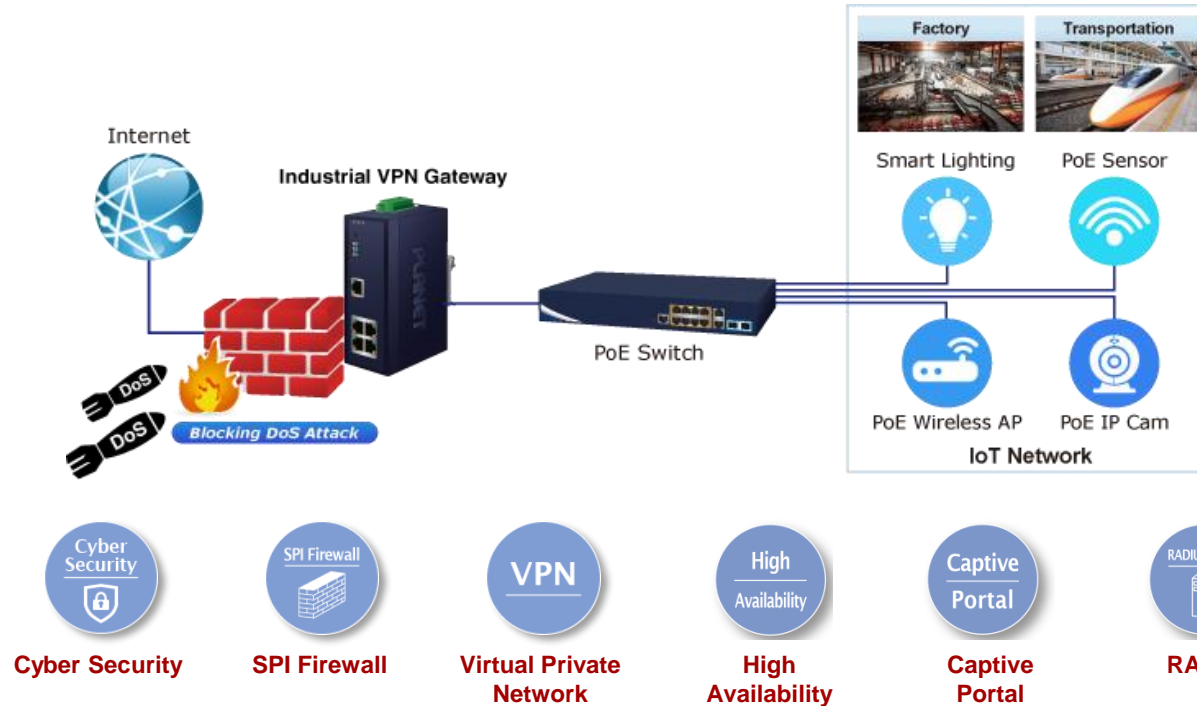


cartronicgroup

DISTRIBUIDOR
OFICIAL

Advantages of PLANET Solution

- Ensures a safe and secure network in any sector



Network Security Products

- **5G NR / 4G LTE Cellular Gateway**



- **VPN Security Gateway**



- **Flat-type Smart Router**



- **Wireless VPN Router**



Product Features

5G NR / 4G LTE Cellular Gateway

Features ICG-2515W-NR Series

Industrial **5G NR** Cellular Wireless Gateway with 5-Port 10/100/1000T

◆ Cellular Features

- ✓ Supports multi-band Sub-6G/ FDD LTE/ TDD LTE/ WCDMA GSM
- ✓ Sub-6G: **2.4Gbps**(DL)/ **500Mbps**(UL) ; LTE: 1Gbps(DL)/ 200Mbps(UL)
- ✓ Dual module SIMs for **network redundancy**

◆ Wi-Fi 6 Wireless

- ✓ Compliant with **Wi-Fi 6 IEEE 802.11ax** dual-band for mobile client connectivity
- ✓ Supports data rate of up to 1800Mbps (600Mbps in 2.4GHz and 1200Mbps in 5GHz)

◆ Serial over LTE

- ✓ 2 DI, 1 DO ports
- ✓ 1 RS232 or RS485 serial port

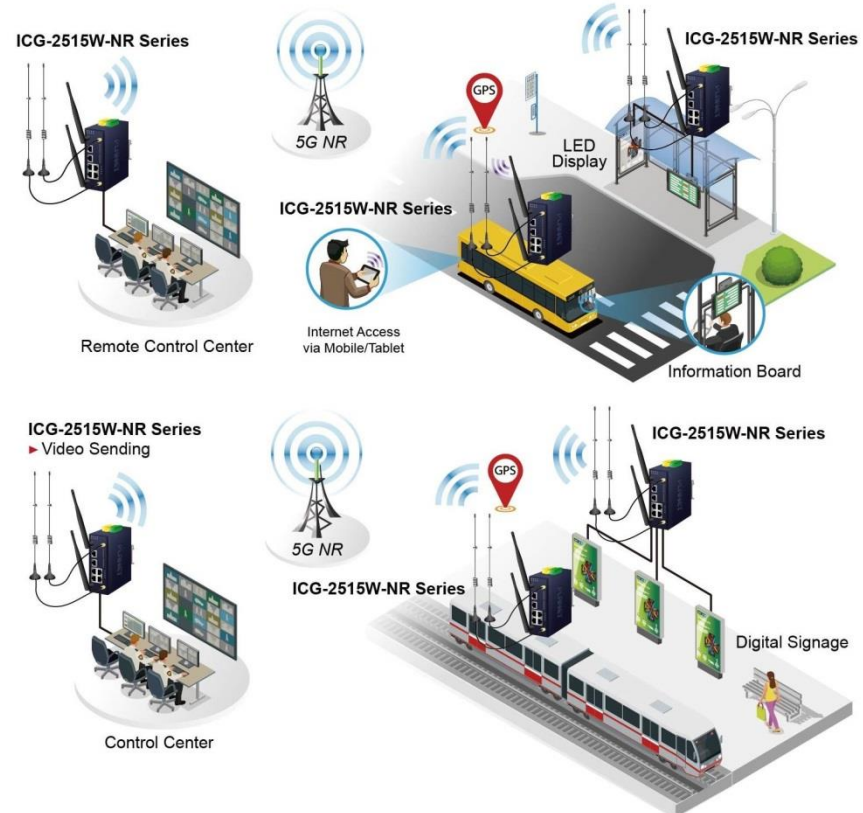
◆ Industrial Conformance

- ✓ 9~56V DC power input
- ✓ -40 to 75 degrees C operating temperature
- ✓ IP30-rated metal case



5G NR Cellular Gateway Application

- **Making Network Connection Easy and Secure with 5G NR / 4G LTE Cellular Gateway**



Features ICG-2510 Series

Industrial **4G LTE** Cellular Wireless Gateway with 5-Port 10/100/1000T

◆ Cellular Features

- ✓ Supports multi-band FDD LTE/TDD LTE/ WCDMA GSM/LTE Cat4
- ✓ Dual module SIMs for network load balancing and redundancy
- ✓ Wi-Fi compliant IEEE 802.11b/g/n/ac dual-band for mobile client connectivity

◆ Serial over LTE

- ✓ 2 DI, 1 DO ports
- ✓ 1 RS232 or RS485 serial port

◆ Industrial Conformance

- ✓ 5~36V DC power input
- ✓ -35 to 75 degrees C operating temperature
- ✓ IP30-rated aluminum case

◆ Full/Secure Management

- ✓ SSHv2 and SNMPv3 management
- ✓ SNMP and Trap Alarm



ICG-2510W-LTE

ICG-2510WG-LTE (GPS included)

4G LTE Cellular Gateway Application

- Making Network Connection Easy and Secure with 4G LTE Cellular Gateway



Features ICG-2420 Series

Industrial **4G LTE** Cellular Gateway with 4-Port 10/100TX

◆ Cellular Features

- ✓ Supports multi-band FDD LTE/TDD LTE/WCDMA/GSM/LTE Cat4
- ✓ Built-in Dual SIM for network redundancy

◆ Serial over LTE

- ✓ 2 DI and 1 DO ports
- ✓ 2 RS232 and 1 RS485 serial ports

◆ Industrial Conformance

- ✓ 10~32V DC power input
- ✓ -20 to 70 degrees C operating temperature
- ✓ IP40-rated aluminum case

◆ Full/Secure Management





- ✓ SSHv2 and SNMPv3 management
- ✓ SNMP and Trap Alarm



ICG-2420-LTE

ICG-2420G-LTE (GPS included)

5G NR / 4G LTE Cellular Gateway Series

Model	ICG-2515W-NR	ICG-2515WP-NR	ICG-2510W-LTE	ICG-2510WG-LTE	ICG-2420-LTE	ICG-2420G-LTE
Features						
Cellular	5G NR		4G LTE		4G LTE	
SIM Interface	2 SIM slots with redundancy		2 SIM slots with redundancy and load balance		2 SIM slots with redundancy	
Copper Interface	1 WAN 10/100/1000BASE-T 4 LAN 10/100/1000BASE-T		1 WAN 10/100/1000BASE-T 4 LAN 10/100/1000BASE-T		1 WAN 10/100BASE-TX 3 LAN 10/100BASE-TX	
Serial Interface	1 serial port (RS232/ RS485)		1 serial port (RS232/ RS485)		2 RS232 and 1 RS485	
Wi-Fi Interface	802.11ax, 2.4G/ 5G dual band antenna		1 2.4G/ 5G dual band antenna		--	
Power over Ethernet	--	4 x 802.3at PoE+	--	--	--	--
GPS Interface	--		--	■	--	■
DI/DO Interface	2 DI, 2 DO		2 DI, 1 DO		2 DI, 1 DO	
Modbus TCP	■		■		■	
Central Management	UNI-NMS		UNI-NMS		UNI-NMS	
Operating Temperature	-40~75 degrees C		-35~75 degrees C		-20~70 degrees C	
Power Input	9~48V DC	48~56V DC	9~36V DC		10~32V DC	

Features VCG-1500WG-LTE

Vehicle 4G LTE Cellular Wireless Gateway with 5-Port 10/100TX

◆ Cellular Features

- ✓ With E-mark (E24) certified for Internet of Vehicle (IoV) environment
- ✓ Supports multi-band FDD LTE/ TDD LTE/ WCDMA/ GSM/ LTE Cat4
- ✓ Wi-Fi compliant IEEE 802.11b/g/n 2.4GHz for mobile client connectivity

◆ Serial over LTE

- ✓ 2 TF card and 1 USB ports
- ✓ 1 RS232 serial ports

◆ Industrial Conformance

- ✓ 6~32V DC power input
- ✓ -25 to 65 degrees C operating temperature
- ✓ IP30-rated aluminum case

◆ Full/Secure Management

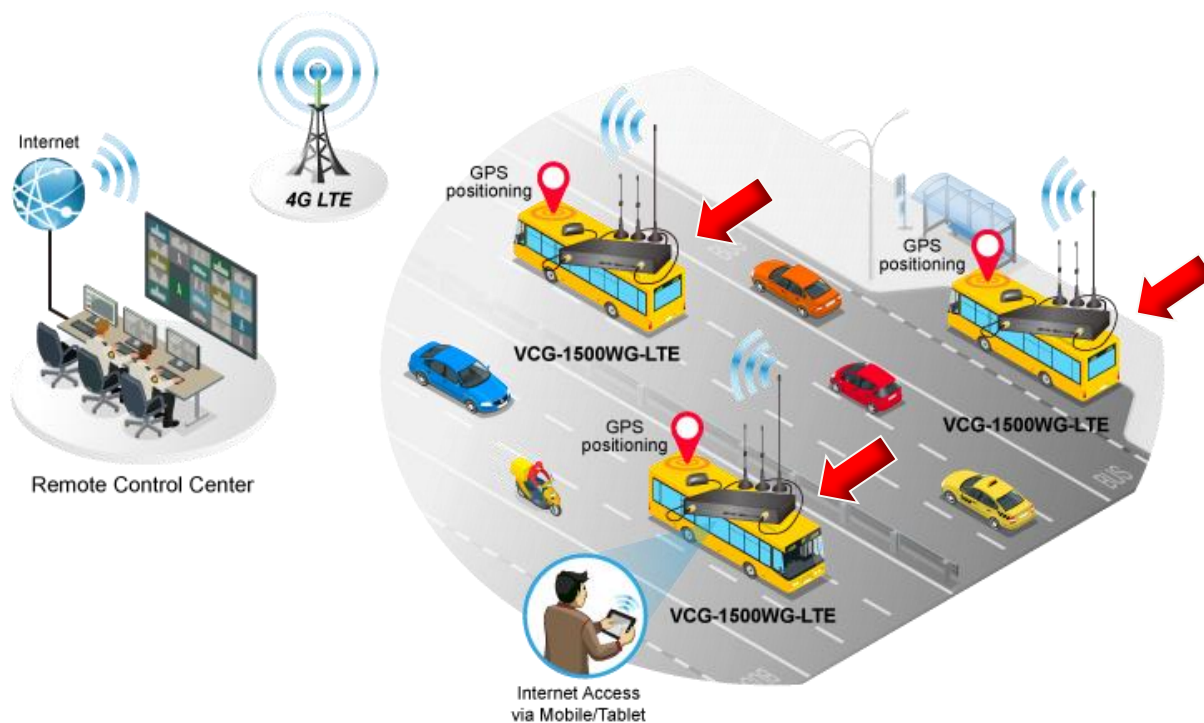
- ✓ GPS antenna allows to detect the location via sat nav system
- ✓ CMS (Central Management System) for remote management and Wi-Fi advertising



VCG-1500WG-LTE (GPS included)

4G LTE Cellular Gateway Application

- **Secure Network Connection for IoV applications**



Product Features

VPN Security Gateway



Features VPN Security Router



- ◆ **Dual-WAN failover** and **Dual-WAN load balancing**
- ◆ **SSL VPN** and **robust hybrid VPN** (IPSec/ GRE/PPTP/ L2TP over IPSec)
- ◆ Stateful Packet Inspection (**SPI**) firewall and content filtering
- ◆ Blocks **DoS/DDoS** attack, port range forwarding
- ◆ IPv6, SNMP, PLANET DDNS and **cyber security** with HTTPS
- ◆ Simplified security management and wizard networking deployment

Features Enterprise VPN Gateway

◆ Networking

- ✓ Dual-WAN failover and dual-WAN load balancing
- ✓ Wizard, IPv6, SNMP, PPPoE, QoS, VLAN and PLANET DDNS
- ✓ Static route, Dynamic route, RIPv1/v2, OSPF
- ✓ High availability, AP controller, captive portal and RADIUS
- ✓ Compliant with the IEEE 802.11ac and 802.3at PoE+ with PD alive check/ schedule management

◆ Advanced Security

- ✓ SSL VPN and robust hybrid VPN (IPSec/ GRE/ PPTP/ L2TP over IPSec)
- ✓ Cybersecurity, SPI firewall and content filtering
- ✓ Blocks DoS/ DDoS attack, port range forwarding and cybersecurity with HTTPS
- ✓ Hardware NAT accelerates internet NAT routing performance



VR-300

VR-300W (802.11ax compliant)



VR-300P (802.3at PoE+ compliant)

VR-300WP (802.11ax+802.3at PoE+ compliant)

Enterprise VPN Gateway Application

Excellent Ability in Threat Defense



Dual WAN ports

2 WAN ports for failover, offering non-stop network connectivity.



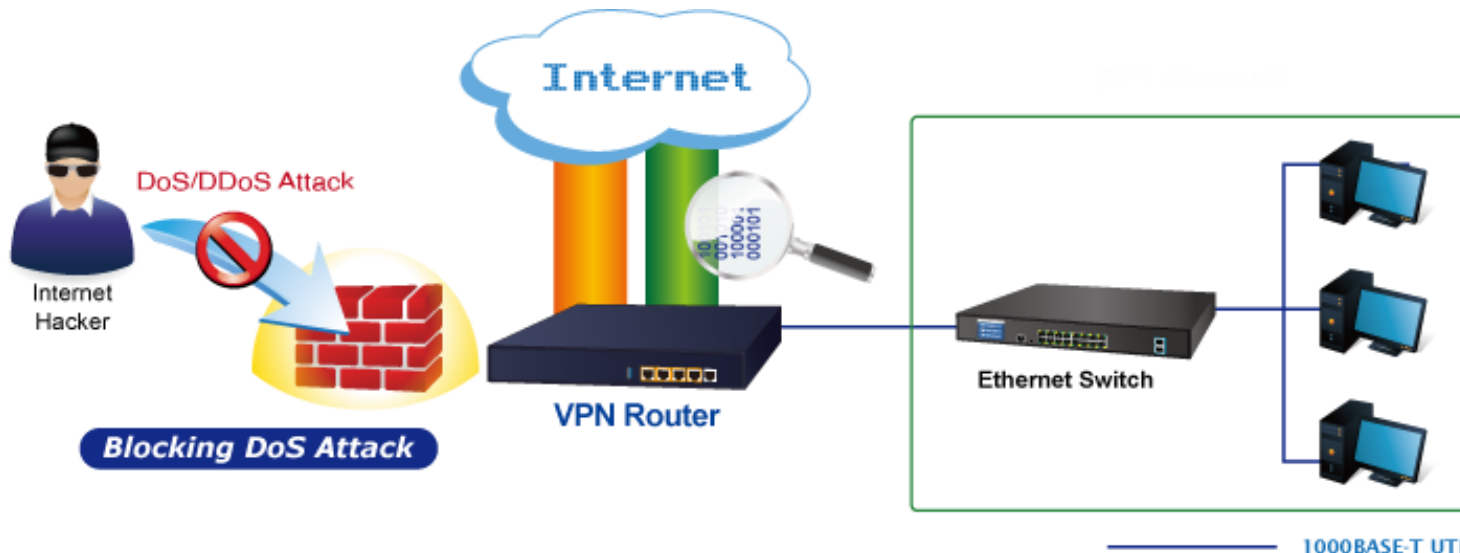
Load Balancing

Balance network traffic across the WAN ports.

VPN Gateway Features - 1

◆ Excellent Ability in Threat Defense

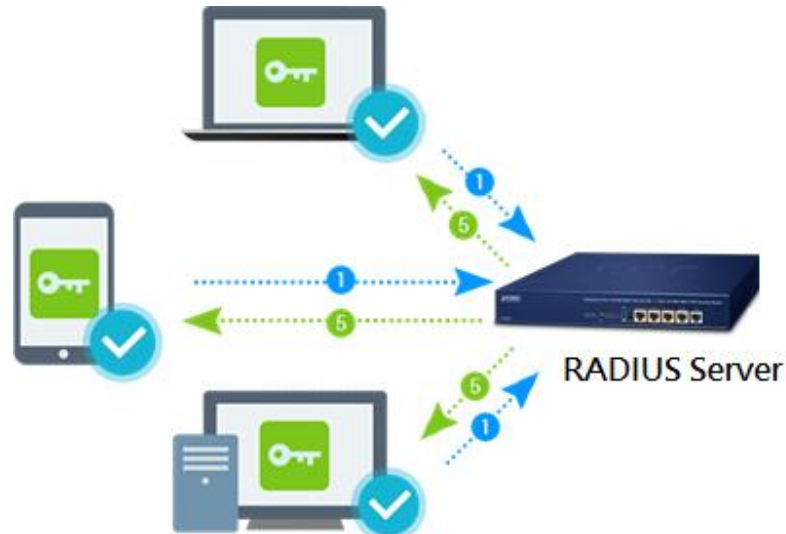
- ✓ Built-in **Cybersecurity**, **SPI** (stateful packet inspection) **firewall** and **DoS/ DDoS attack** mitigation functions provide high efficiency and extensive protection for your network.



VPN Gateway Features - 2

◆ Wi-Fi Authentication with Simplified Management

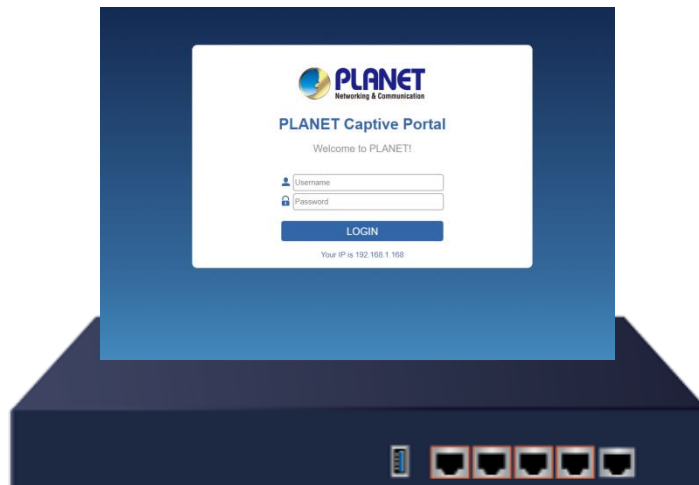
- ✓ Provides a built-in AP Controller, Captive Portal, **RADIUS** and a DHCP server to facilitate small and medium businesses to deploy secure employee and guest access services without any additional server.



VPN Gateway Features - 3

◆ Wi-Fi Access with Simplified Management

- ✓ Provides a built-in AP Controller, **Captive Portal**, RADIUS and a DHCP server to facilitate small and medium businesses to deploy secure employee and guest access services without any additional server.



VPN Gateway Features - 4

◆ Improving System and Network Efficiency

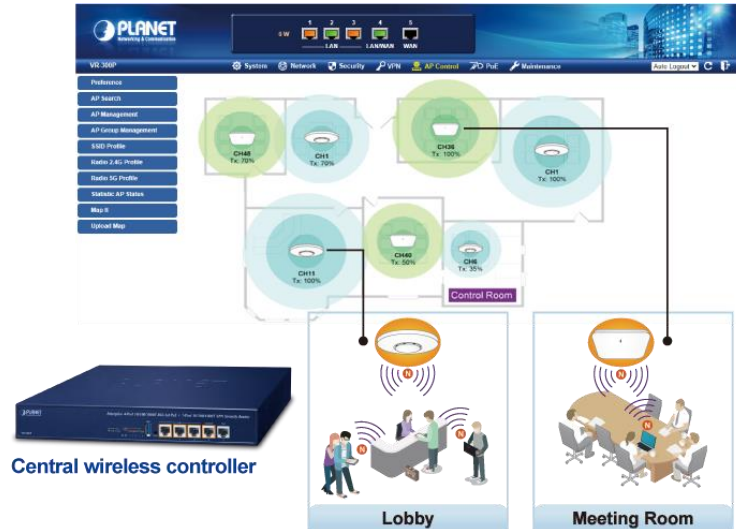
- ✓ **High-Availability** and **Dual-WAN** interfaces enable the VR-300 series to support system/ WAN outbound load balancing and fail-over features.



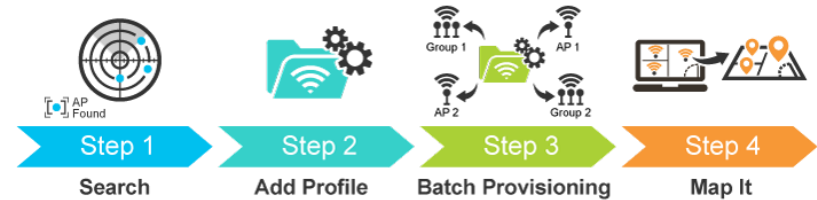
VPN Gateway Features - 5

◆ Centralized Remote Control of Managed APs

- ✓ The VR-300 series provides centralized management of PLANET Smart AP series via a user-friendly Web GUI.



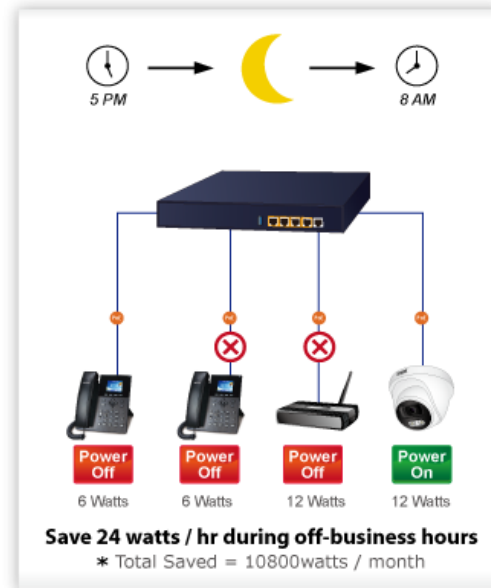
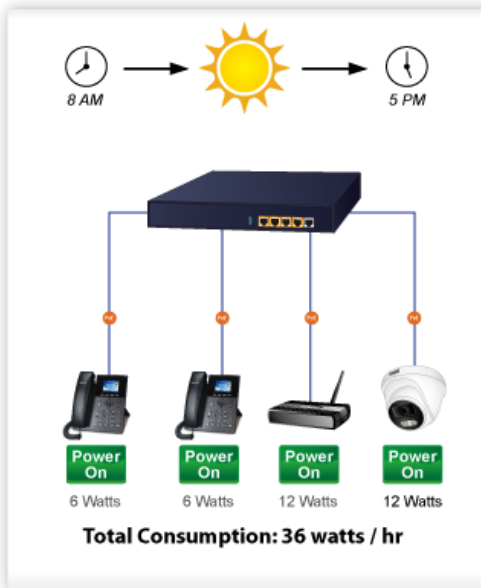
Simplified Cluster Management with 4 Steps







VR-300P 、 VR-300WP Features

◆ Built-in Unique PoE Functions for Powered Devices Management

- ✓ PoE Usage Monitoring
- ✓ PoE Schedule
- ✓ PD Alive Check
- ✓ Scheduled Power Recycling



Enterprise VPN Gateway Series

Model	VR-100	VR-300	VR-300W	VR-300P	VR-300WP	VR-300FP	VR-300F	VR-300W-NR
Features								
Gigabit RJ45 Port	5	5	5	5	5	4	4	5
Gigabit Fiber Port	--	--	--	--	--	1	1	--
PoE+ Port	--	--	--	4 * 802.3at PoE+			--	--
Cellular	--	--	--	--	--	--	--	5G NR
Wireless	--	--	802.11ax	--	802.11ax	--	--	802.11ax
OSPF Routing	■	■	■	■	■	■	■	■
SD-WAN	--	■	■	■	■	■	■	■
Switch Co-Defense	--	■	■	■	■	■	■	■
High Availability	--	■	■	■	■	■	■	■
Captive Portal	■	■	■	■	■	■	■	■
RADIUS	■	■	■	■	■	■	■	■
Wireless AP Management	--	■ (16)	■ (16)	■ (16)	■ (16)	■ (16)	■ (16)	■ (16)
Intelligent PoE Management	--	--	--	■	■	■	--	--

Features Industrial VPN Gateway

◆ Networking

- ✓ Dual-WAN failover and dual-WAN load balancing
- ✓ Wizard, IPv6, SNMP, PPPoE, QoS, VLAN and PLANET DDNS
- ✓ Static route, Dynamic route, RIPv1/v2, OSPF

◆ Advanced Security

- ✓ SSL VPN and robust hybrid VPN (IPSec/ GRE/ PPTP/ L2TP over IPSec)
- ✓ SPI firewall and content filtering
- ✓ Blocks DoS/DDoS attack, port range forwarding and cybersecurity with HTTPS
- ✓ Hardware NAT accelerates internet NAT routing performance

◆ Industrial Conformance

- ✓ -40 to 75 degrees C operating temperature
- ✓ 9~48V DC, redundant power with polarity reverse protect function



IVR-100

Features Industrial VPN Gateway

◆ Networking

- ✓ Dual-WAN failover and dual-WAN load balancing
- ✓ Wizard, IPv6, SNMP, PPPoE, QoS, VLAN and PLANET DDNS
- ✓ Static route, Dynamic route, RIPv1/v2, OSPF
- ✓ High availability, AP controller, captive portal and RADIUS
- ✓ Compliant with the IEEE 802.11ax and 802.3at PoE+ with PD alive check/schedule management

◆ Advanced Security

- ✓ SSL VPN and robust hybrid VPN (IPSec/ GRE/ PPTP/ L2TP over IPSec)
- ✓ SPI firewall and content filtering
- ✓ Blocks DoS/DDoS attack, port range forwarding and cybersecurity with HTTPS
- ✓ Hardware NAT accelerates internet NAT routing performance

◆ Industrial Conformance

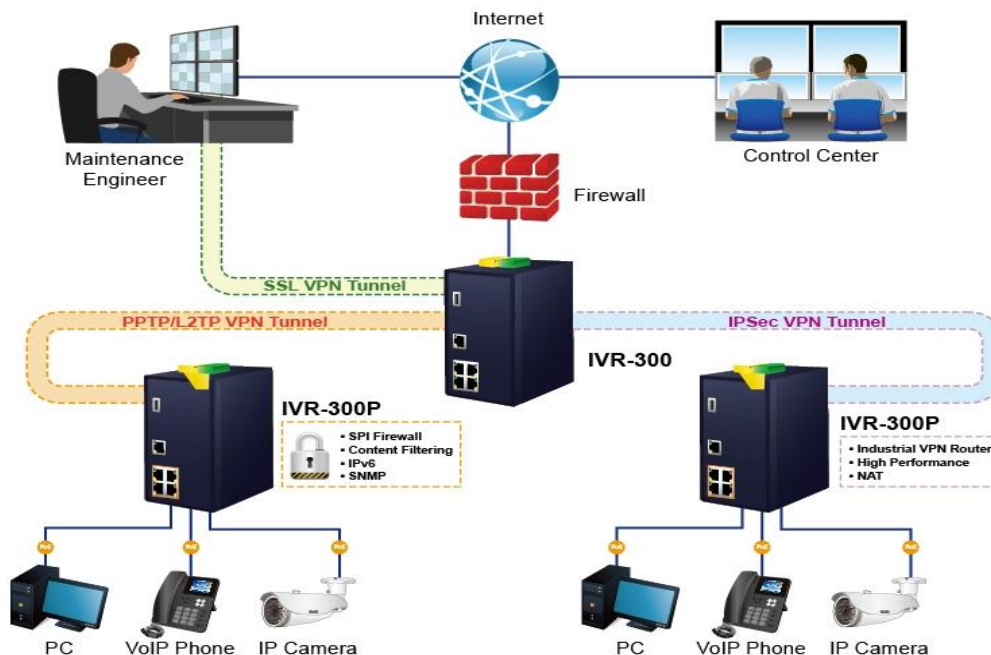
- ✓ -40 to 75 degrees C operating temperature
- ✓ 9~48V DC, redundant power with polarity reverse protect function



- **IVR-300**
- **IVR-300P** (802.3at PoE+ compliant)
- **IVR-300W** (802.11ax compliant)
- **IVR-300WP** (802.11ax, 802.3at PoE+ compliant)

Industrial VPN Gateway Application

- Secure Data Delivery through Varied Types of VPN Tunnels



Enterprise VPN Gateway Series

Model	IVR-100	IVR-300	IVR-300W	IVR-300P	IVR-300WP	IVR-300FP	IVR-300F
Features							
Gigabit RJ45 Port	5	5	5	5	5	4	4
Gigabit Fiber Port	--	--	--	--	--	1	1
PoE+ Port	--	--	--	4 * 802.3at PoE+			--
Wireless	--	--	802.11ax	--	802.11ax	--	--
OSPF Routing	■	■	■	■	■	■	■
SD-WAN	--	■	■	■	■	■	■
Switch Co-Defense	--	■	■	■	■	■	■
High Availability	--	■	■	■	■	■	■
Wireless AP Management	--	■ (16)	■ (16)	■ (16)	■ (16)	■ (16)	■ (16)
Captive Portal	■	■	■	■	■	■	■
RADIUS	■	■	■	■	■	■	■
Intelligent PoE Management	--	--	--	■	■	■	--

Product Features

Flat-type Smart Router

Flat-type Smart Router

- ◆ 2.4-inch color LCD touch screen with management functions (WGR-500-4PV)
- ◆ 802.3af/at PoE injector, 120-watt PoE budget (WGR-500-4P/-4PV)
- ◆ LED indicators for per port PoE In-Use and PoE Power Usage (WGR-500-4P/-4PV)
- ◆ PoE Schedule/ Schedule Power Recycle/ PD alive check (WGR-500-4P/-4PV)
- ◆ Firewall with 802.1Q VLAN security
- ◆ IPv6 and SNMP management support
- ◆ Wizard design and PLANET DDNS support
- ◆ SNMP, Port Forwarding, DMZ, and UPnP
- ◆ Hardware NAT accelerates internet NAT routing performance
- ◆ Dual redundant power input: terminal block and DC jack
- ◆ Wall-mount, Magnetic wall-mount, DIN-rail installation



WGR-500-4PV



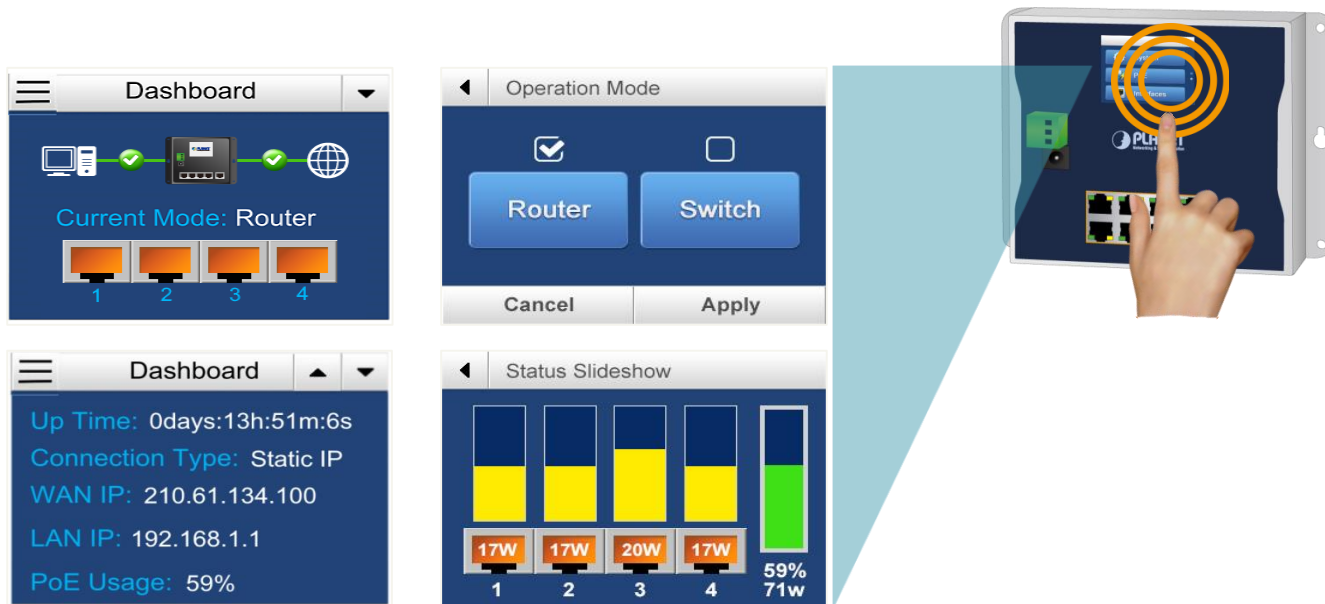
WGR-500-4P



WGR-500

Intuitive LCD Control by WGR-500-4PV

- Smart LCD touch panel facilitates the operation management and PoE PD management.



Flat-type Smart Router Series

Model	WGR-500-4PV	WGR-500-4P	WGR-500
			
Features			
Gigabit RJ45 Port	5	5	5
PoE+ Port	4	4	--
Router / Switch	■	■	■
IPv6	■	■	■
Firewall	■	■	■
VLAN	■	■	■
LCD Touch Screen	■	--	--
Dual Power	48-56V DC	48-56V DC	9-48V DC

Product Features

Wireless VPN Router

Features WDRT-1202AC

Dual-band 11ac 1200Mbps Router

- ◆ 802.11a/b/g/n/ac compliant, up to **1200Mbps** performance
- ◆ **Dual-band** (2.4GHz & 5GHz) Wireless technology capable of up to 300+867Mbps data rate
- ◆ Four **Gigabit** LAN ports
- ◆ Wireless Schedule for power saving
- ◆ Scheduled Reboot and parent control
- ◆ Supports PPTP/ L2TP VPN client function to connect to Internet VPN server
- ◆ Easy for file sharing and charging mobile devices with **USB 2.0 port**
- ◆ Built-in **DLNA Media Server** allows DLNA-enabled devices to share and stream multimedia files over home network
- ◆ **Guest SSID** to allow users to access different networks through one single AP
- ◆ Supports **NTP, Port Forwarding, UPnP and DMZ** for various networking applications





cartronicgroup



AÑOS | YEARS
linking with you

Avda. Fuente Nueva, 12. 28703
San Sebastián de los Reyes – Madrid – España.

Teléfono: +34 916 588 760

marketing@cartronic.es

www.grupocartronic.com