



Hotel Solutions

Combining customer safety and business intelligence

Many hotel brands now offer much more than just short-term accommodation. New services such as beauty and massage, hosted events, fine dining and meeting room facilities are constantly being added to their existing offering. Some hotels have also expanded into the resorts and long-term accommodation (aparthotel) markets. The hotel industry has evolved its business model, attracting different types of customers with new requirements which all need to be managed.

Hanwha Vision offer solutions that extend beyond just standard CCTV systems: intelligent audio and video analytics provide the industry with the business insights needed to increase customer satisfaction and boost productivity.

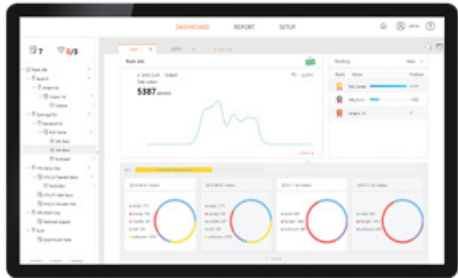
Highlights

- **Comprehensive camera range** – to suit any environment and project budget.
- **Scalable recording platform** – utilising multiple network video recorders (NVRs) or server based solutions from industry leading vendors.
- **Control of your system with multiple viewing solutions** – from simple to use workstation interface, to large multi-display video wall as well as smartphone access.
- **Intelligent analytics** – on-camera embedded data, video and audio analytics.
- **Discreet options** – our mini multi-directional AI camera provides a compact and intelligent option.
- **We move with Trust** – confidence in the brand with 5 year warranty.



Surveillance and business intelligence combined with Hanwha Vision's dashboard

- **More than just CCTV** – On-camera embedded data analytics.
- **Beyond security expertise** – separate from security system, central customisable web based dashboard with configurable access permissions for any stakeholders.
- **Intelligent data analytics** – capture and review performance of a space within your premises using people counting, heatmap and queue management analytics.
- **Export and collaborate** – Boost your reporting metrics with our customisable multi-format report function to suit any type of audiences and stakeholders.



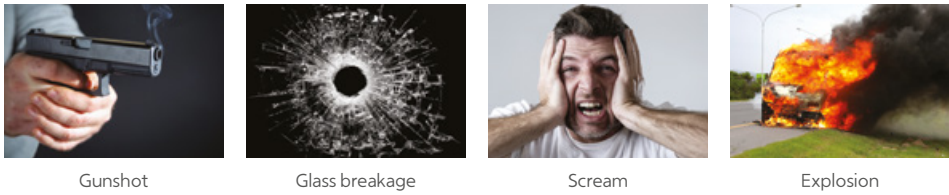
Elegant, discreet and yet powerful

- **See more with less cameras** – extended options of fisheye and multi-sensor.
- **Clarity and detail** – from dark to bright scenes.
- **Easy setup and maintenance** – remotely motorised lenses.
- **Power options** – connect to conventional power source or use network PoE.
- **Bespoke colour finish** – cameras can be professionally sprayed to colour blend with any surface.
- **Intelligent analytics** – on-camera embedded data, video and audio analytics.
- **Open Platform** – custom apps.



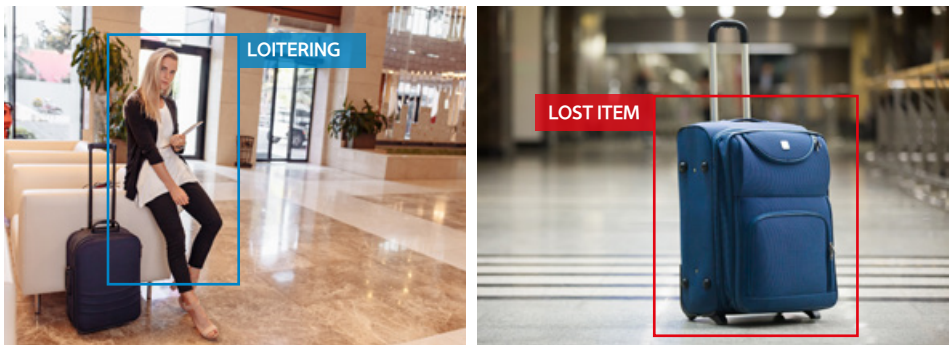
4-Channel
AI Mini
Multi-directional
Camera
PNM-C16013RVQ

SOLUTIONS



Intelligent audio and video analytics

- **Lost** – detect objects in public areas which appear to have been abandoned.
- **Loitering** – detect suspicious behaviour of people remaining for longer than a pre-configured period of time.
- **Intrusion detection** in forbidden areas and crossing virtual lines detection.
- **Smoke and fire detection** – increase your chance of early detection.
- **IP audio** – provide audio messages or play background music.



Reduce your infrastructure requirements with PoE extender cameras

PoE extender cameras offer a cost-effective way to add a camera to an existing system or install a new two camera video surveillance solution. By utilising loop in and out Ethernet connectivity, network switch port allocation is reduced and network cabling requirements are minimised, overall benefiting faster installation time and reducing end-user disruption.

- CCTV Camera system: Pair up PoE Extender camera with another camera.
- CCTV Camera system with IoT device: Pair PoE Extender camera with another device such as Wi-Fi APs, speakers, input/output modules.



Avda. Fuente Nueva, 12. 28703 San Sebastián de los Reyes - Madrid - España
Tel.: +34 916588760. Fax: +34 916588769
E-mail: marketing@cartronic.es
www.grupocartronic.com
www.linkedin.com/company/cartronic-group



Control room solution

- Easy to use Video Management System.
- Designed for 24/7 Operation.
- Multi-tenancy – single platform shared by all and customisable.
- Built-in failover – keep your system going.
- Multipatform Viewing System.
- Intercom system for audio and video two-way communication.
- Compatible clients Windows, macOS, Linux, iOS, Android, Web.

Touchless network intercom

Multiple applications, from acting as a help point for queries and emergencies, to access control or seamless communication with a control room or a front desk reception.

- Touchless call system, allowing individuals to simply raise their hand towards the device to initiate a call.
- Intelligent analytics including line crossing, loitering, tampering and audio detection.
- Built-in speaker and microphone with excellent call clarity.
- Handover events to other cameras to boost security and safety.



TID-600R

- Small and slim form factor
- Full duplex two-way communication
- Best-in-class images with 2MP sensor and WDR
- 16.4ft (5m) IR viewable length
- Wide FoV – HFoV 180°, V FoV 114°
- Touchless call
- SIP 2.0 support

